

STAKEHOLDER ENGAGEMENT ON THE UPPER THAMES – COLLECTIVE DEVELOPMENT OF A PES SCHEME

Chris Short
CCRI, University of Gloucestershire

Outline

- Set the scene – Upper Thames & PES
- Who is involved
- What was on offer
- Why stakeholder engagement
- Where have you reached so far
- Challenges to come ...

Thames River Basin




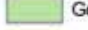

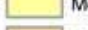





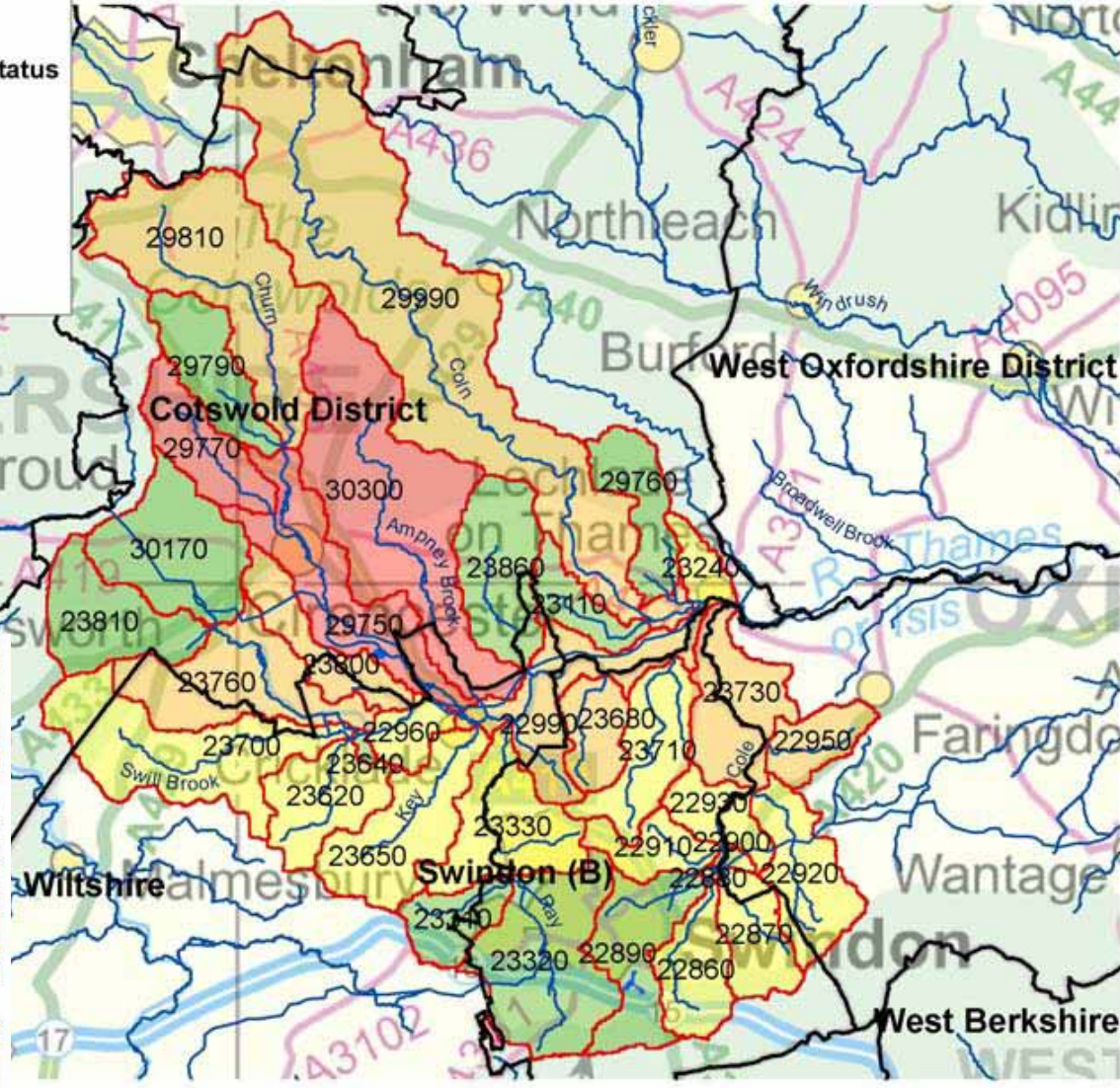
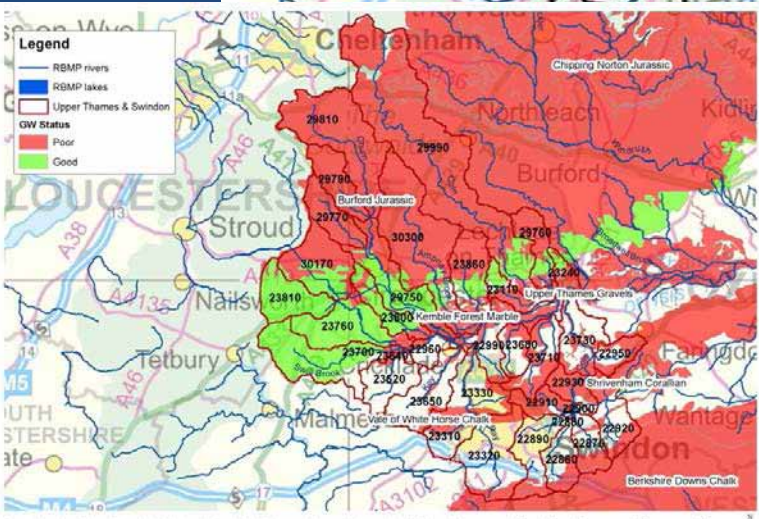
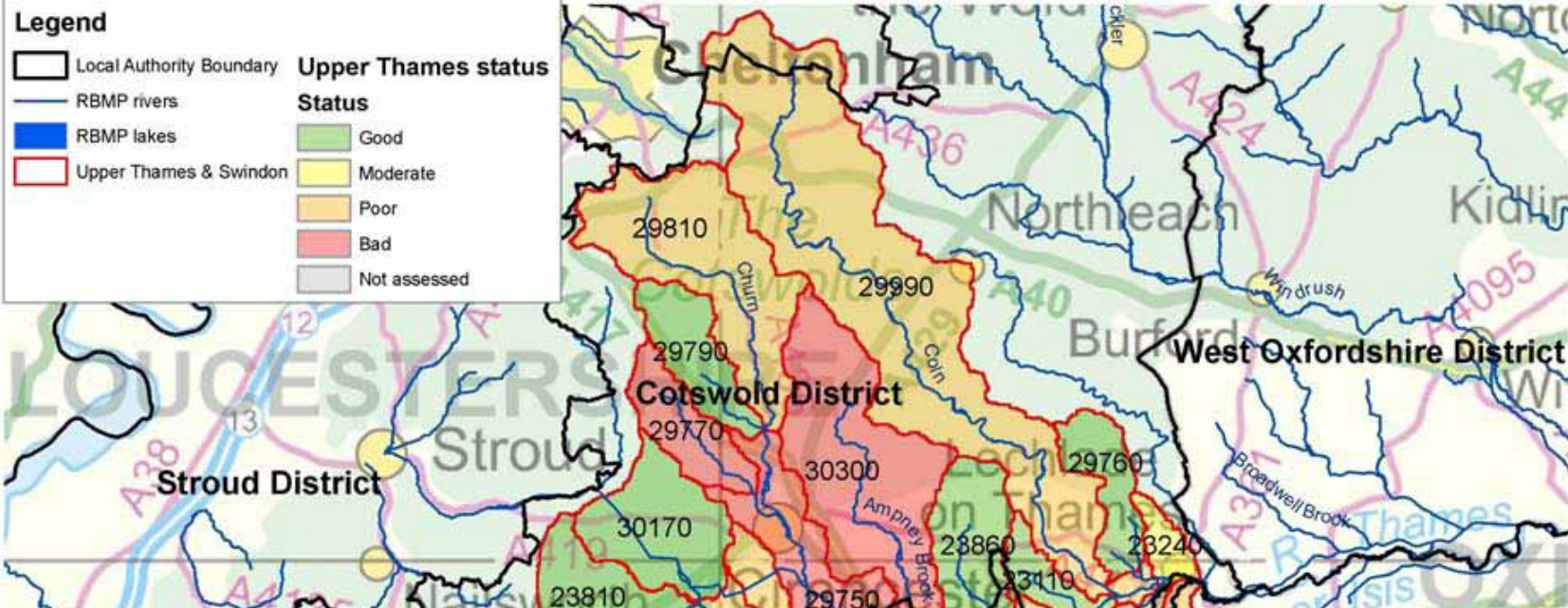
Dividing up the Thames



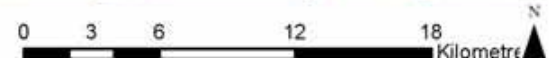
Upper Thames

Legend

	Local Authority Boundary	Upper Thames status
	RBMP rivers	Status
	RBMP lakes	 Good
	Upper Thames & Swindon	 Moderate
		 Poor
		 Bad
		 Not assessed



... of the Environment Agency with the permission of Ordnance Survey.
 ... number 22047.





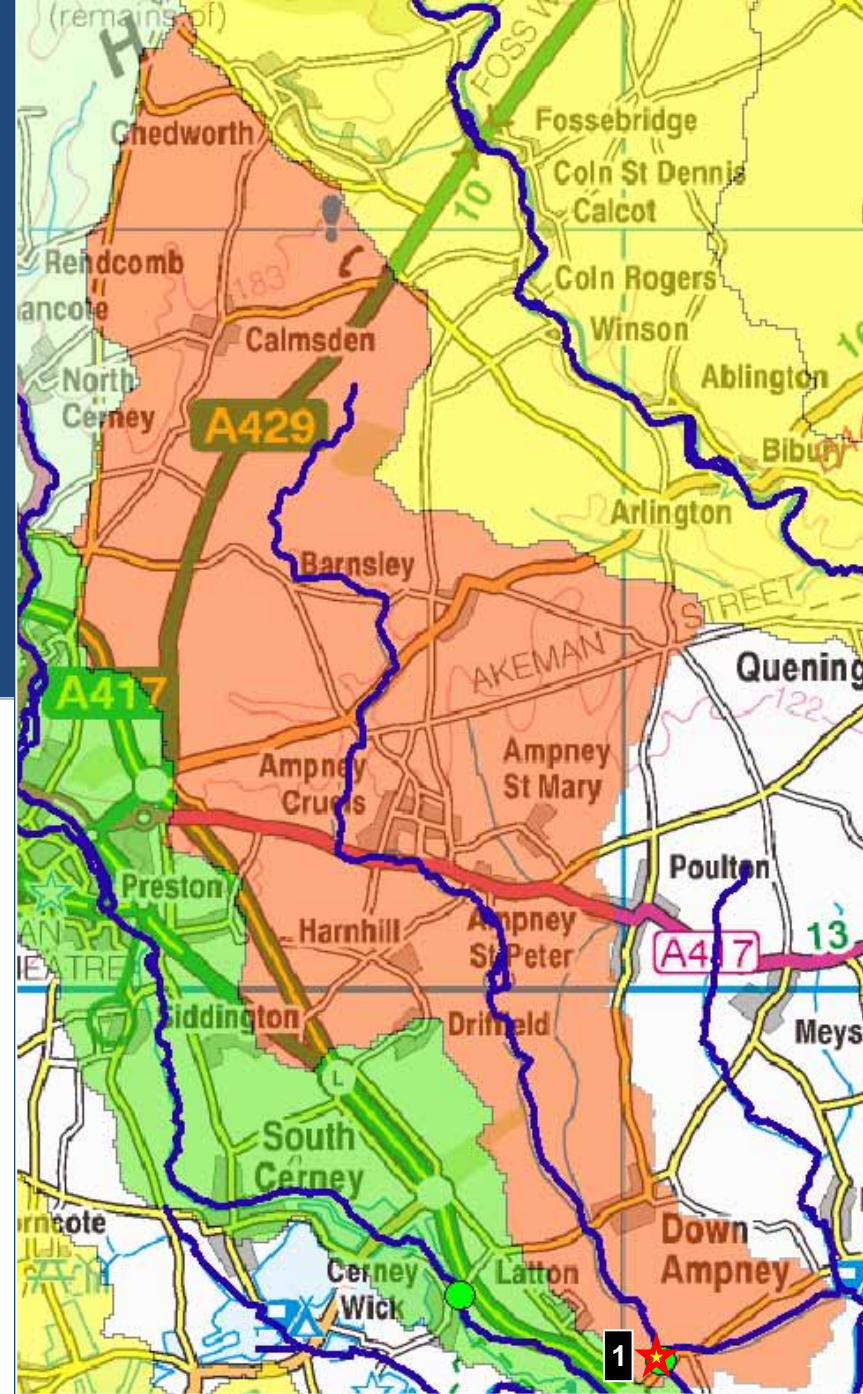
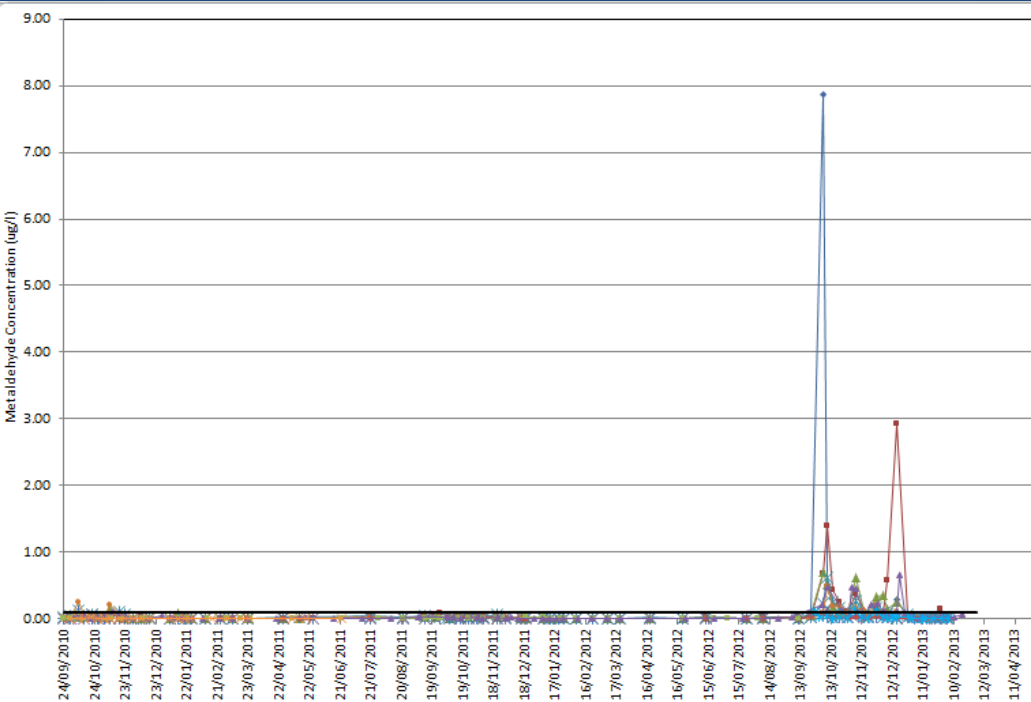


Upper Thames Catchment Partners

- Government Agencies
- Protected landscapes bodies
- Local Authorities
- Farmer Groups
- Private sector: Water utilities, energy providers
- Conservation groups
- Water user groups (fishing and recreation)
- Waterways group (restoration of canal)
- Local communities

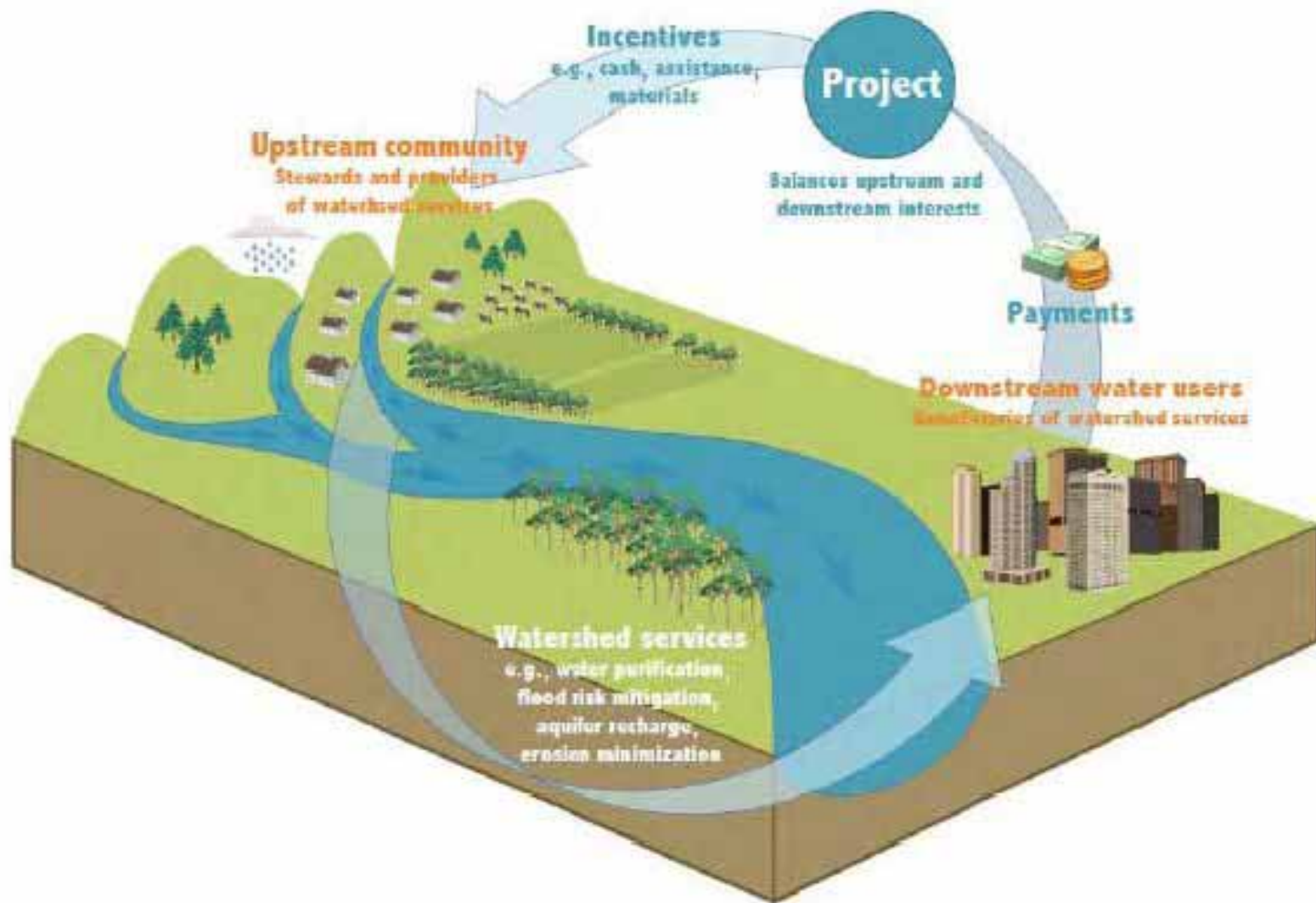
Drivers

- Loss of arable reversion
- WFD failings & CSF
- Flooding, biodiversity
- Metaldehyde levels



The PES concept

Figure 1 The PES concept



Human – Environmental System

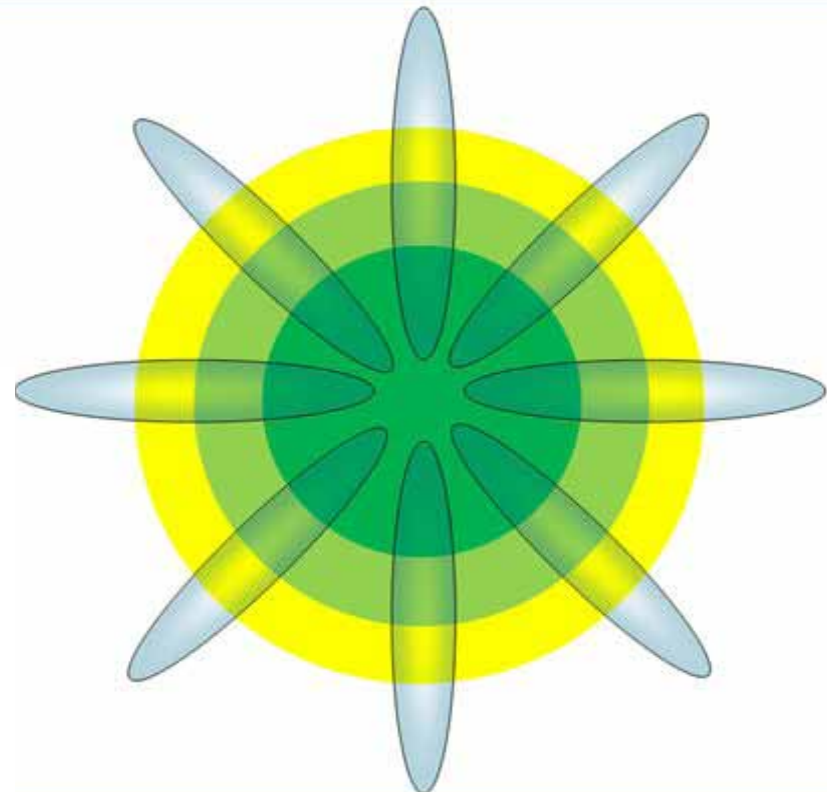


PES = Increasing supply and/or reducing demand

Burkhard et al 2012

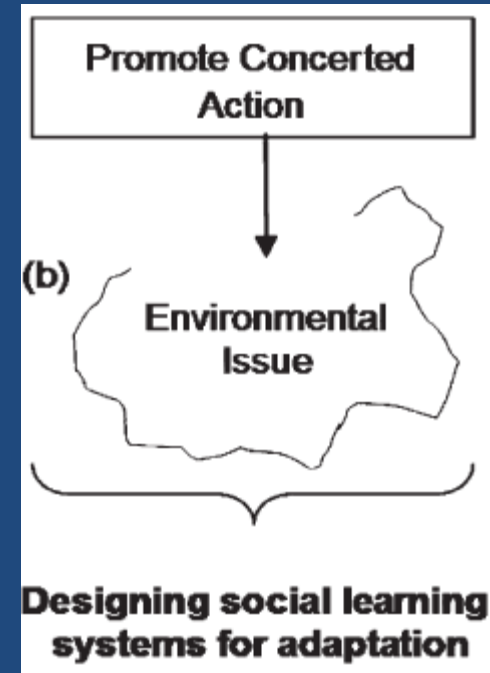
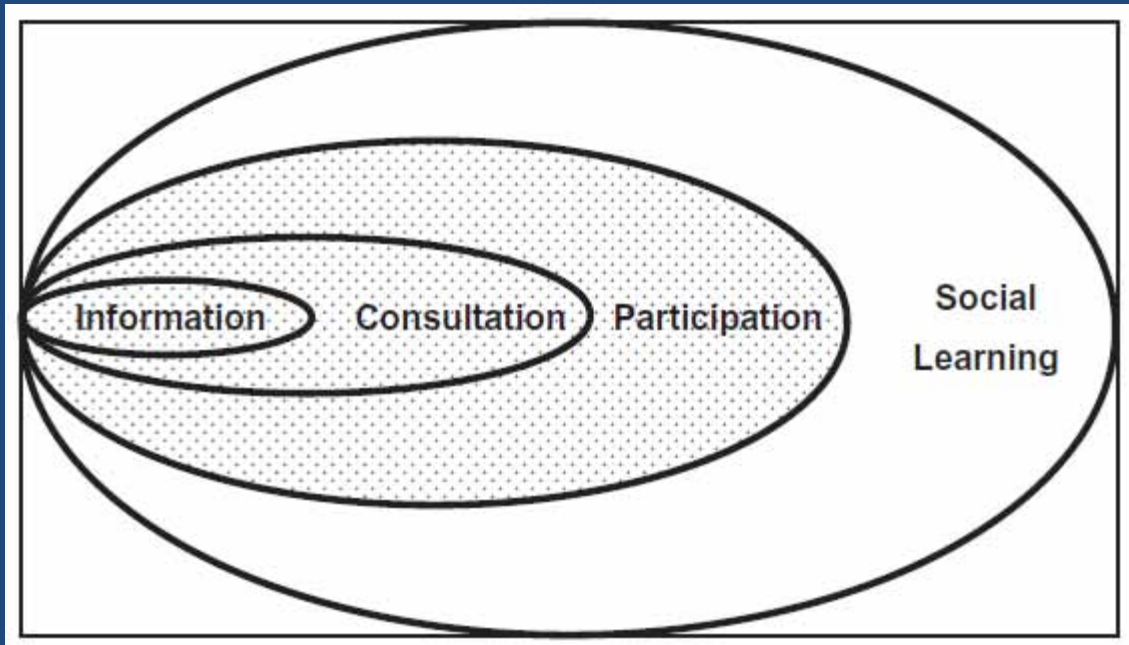
Decision to consider PES

- Thames Water has no wish to be 'regulator'
 - But could suggest banning Metaldehyde
- Had partnership with high engagement
- Partial knowledge of Metaldehyde
 - How it behaves 'in the field'
 - What actions reduce concentrations
- TW will not fund PES on their own
 - Need partnership/other ESS
 - Existing partnership willing to explore



Why stakeholder involvement

Collins and Ison 2009



Full involvement of both sellers and buyers. “Similar to AES but the boxes (options and payment) are empty”.

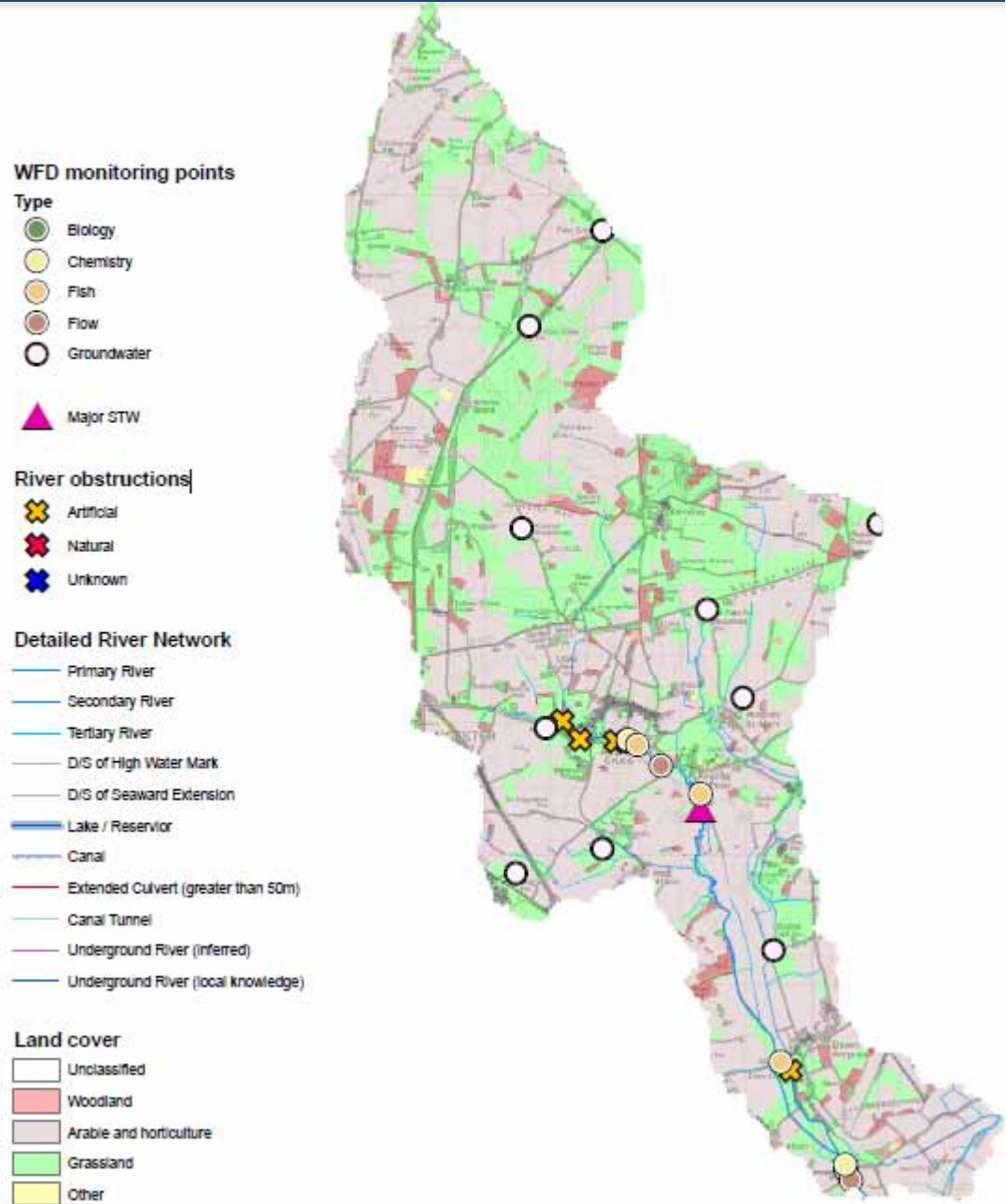


Cotswold PES partnership

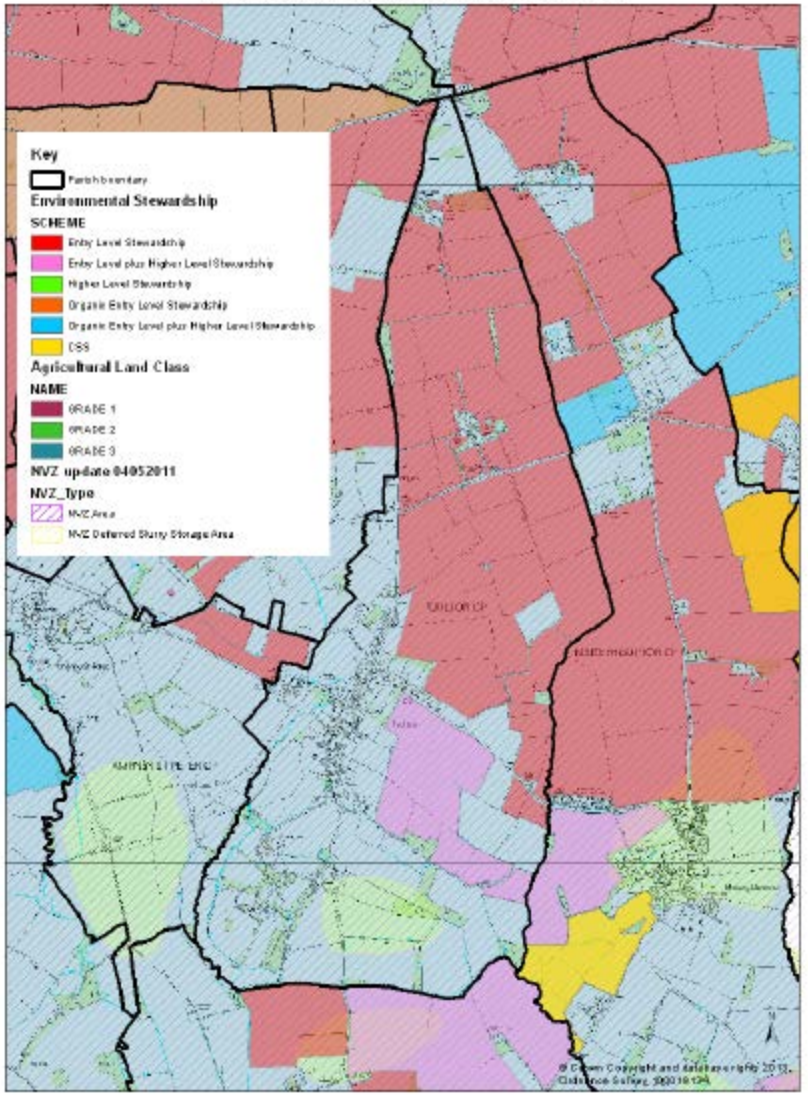
- Sellers – farmers involved at start, data input
- Beneficiaries/Buyers
 - Private sector (Thames Water, Ecotricity)
 - Local communities (develop and benefit from)
 - Public Sector (EA and NE)
- Facilitators – making links and contacts
- Researchers – gather evidence & framework



Importance of maps

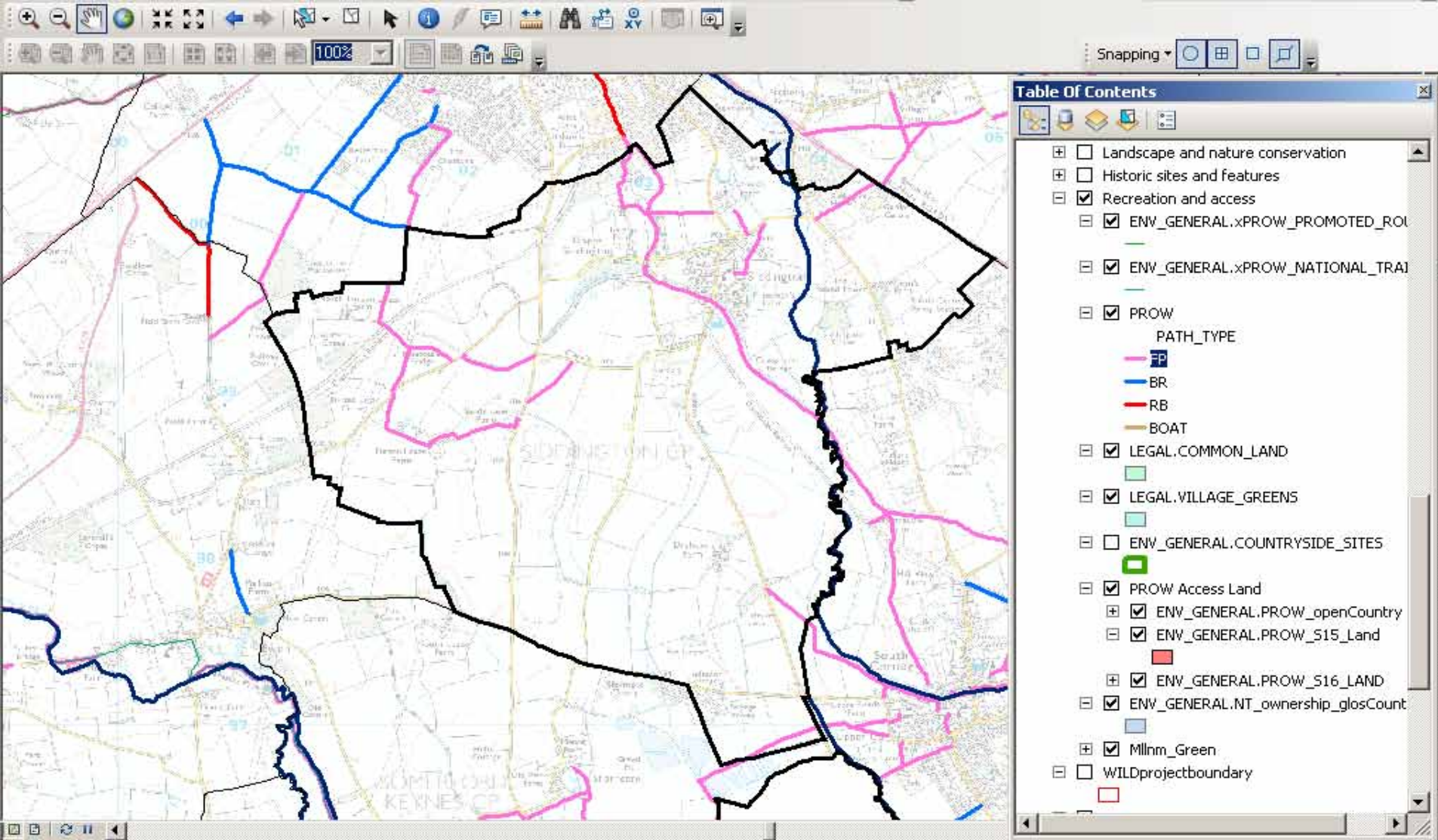


Map of Poulton Parish showing agricultural information.



You are not permitted to copy, re-use, distribute or sell any of the data third parties in any form. 14112 12/2009 0412/1464/2/9

Access to data

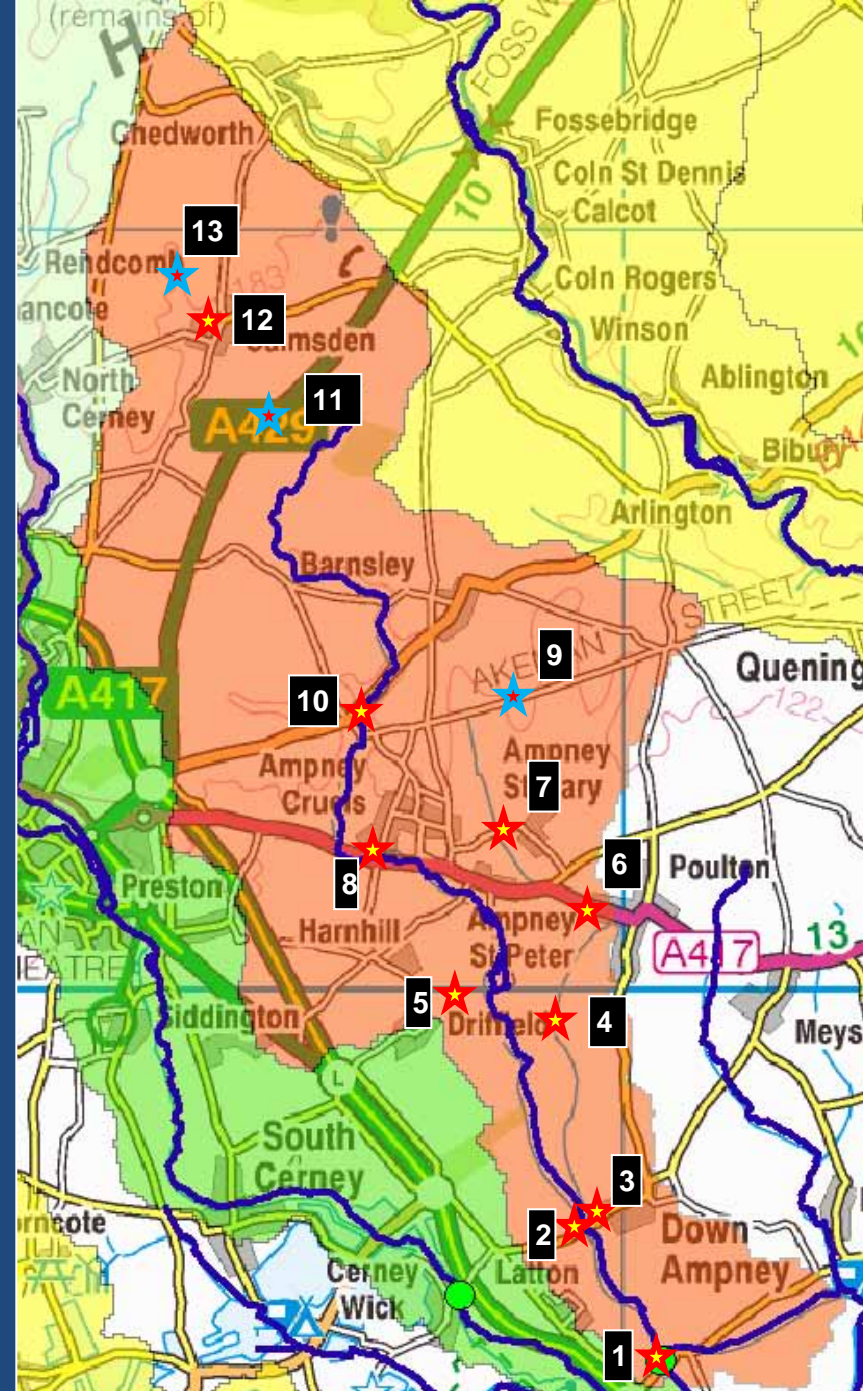


A photograph of a man in a white shirt and dark trousers standing in a field of tall grass, surrounded by several brown and white cows. The background shows a rolling landscape with a village and a church spire in the distance. The text "Reconnecting cultural severance" is overlaid in white on the middle of the image.

Reconnecting cultural severance

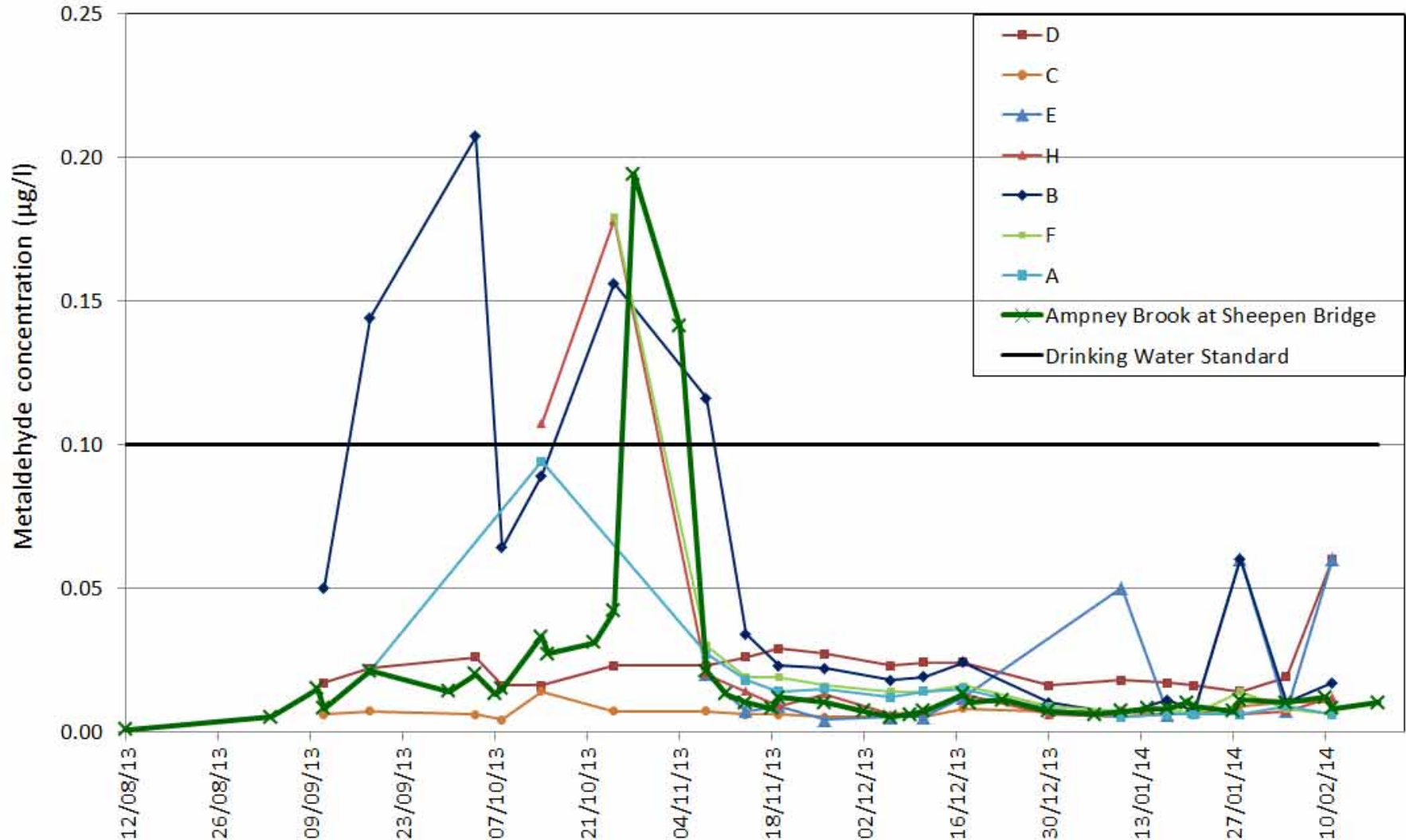
Data collection

- By farmer on farm
 - Nitrate, Phosphate and Ammonia + field diary
- By TW/UWE
 - Metaldehyde, pesticides
- By CSF – soils
- Joint discussion of data
- Agree way forward
 - management options
 - knowledge gaps



More detailed data

Metaldehyde concentrations in the Ampney Brook catchment



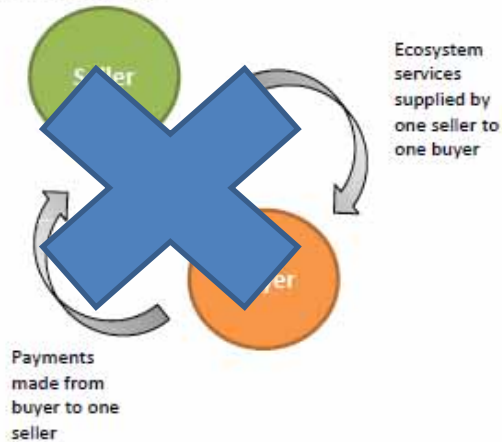
Where are we now

- We need more detail to increase certainty
- Options to take forward:
 - Introduce approved soil management practice
 - Specific management interventions
 - Add energy production component to arable rotation
 - Influencing application management
- Sellers install and researchers/buyers test
- Discuss results and fine tune

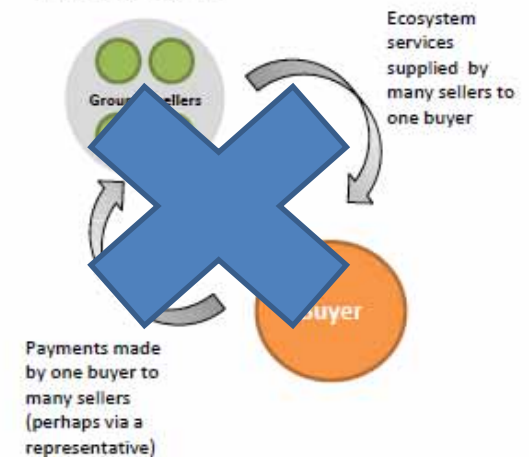
What we have agreed thus far

- Multiple sellers and multiple buyers
 - A 'Many to Many' PES

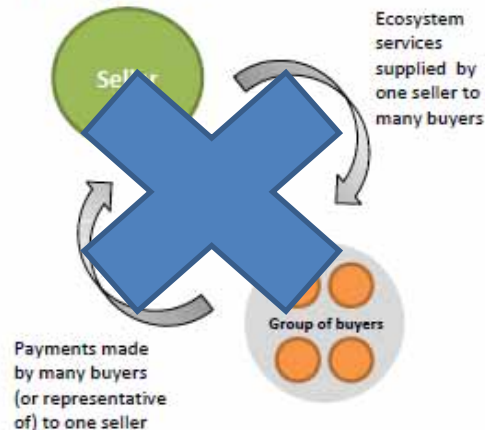
1. 'One to one' PES



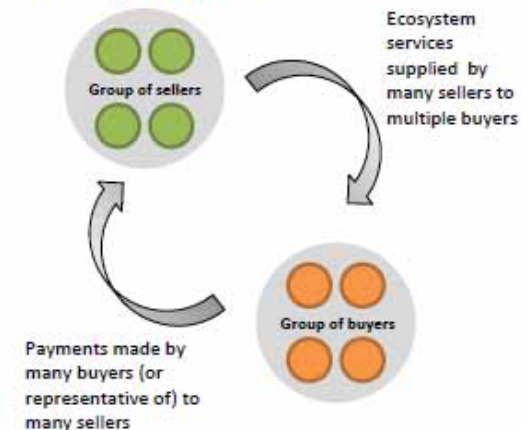
2. 'One to many' PES



3. 'Many to one' PES



4. 'Many to many' PES



What we have agreed thus far

- Bundle of ESs rather than one ES
 - A layering of PES

A Bundling



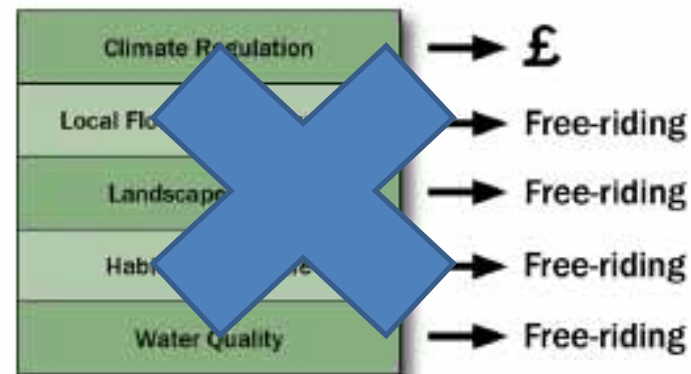
Bundling – a single buyer, or consortium of buyers, pays for the full package of ecosystem services that arise from the same habitat.

B Layering (or stacking)



Layering – multiple buyers pay for the separate ecosystem services that are supplied by a single habitat.

C Piggy Backing



Piggy-backing – Not all of the ecosystem services produced from a single habitat are sold to buyers. One (or a few) service(s) is sold as an umbrella service, whilst other services are said to 'free ride', i.e. the benefits they provide are received by users free of charge.

Payment for what?

- Not the status quo or passive
- Positive (long lasting?) impact (What is this?)
- Payment by input or outcomes (or both)
- What scale and time period (20-25 years)
- Certainty for buyer/beneficiary (required)
- Separating one ES difficult
 - Need system approach



Remaining Challenges

- Including Soil (a slow variable) in the PES
 - structure/porosity/OM for many benefits
- Deepening testing with more interventions
 - Providing certainty for buyer/beneficiaries
 - Providing viability for range of sellers



Remaining Challenges

- Including Soil (a slow variable) in the PES
 - structure/porosity/OM for many benefits
- Deepening testing with more interventions
 - Providing certainty for buyer/beneficiaries
 - Providing viability for range of sellers
- Developing robust framework
- What is 'benefit' of stakeholder engagement
 - Democracy, coordination, environmental effect

Key findings so far

- Scoping to identify assets/beneficiaries
 - Provides basis for partnership
- Benefits of early stakeholder involvement
- Highly skilled facilitation is key
 - Developing trust, enabling engagement
 - Shared problem solving
- High reward for integrating local knowledge
- Participation could change institutions
 - Aid move from sector to territorial approach

Any questions

Thank you

cshort@glos.ac.uk

